

中远摄定焦镜头 YN100mm F2 使用说明书

感谢您购买永诺产品！

在使用本产品前，请务必先仔细阅读本使用说明书，在充分理解内容的基础上，正确使用。请妥善保管好本说明书，以便日后能随时查阅。

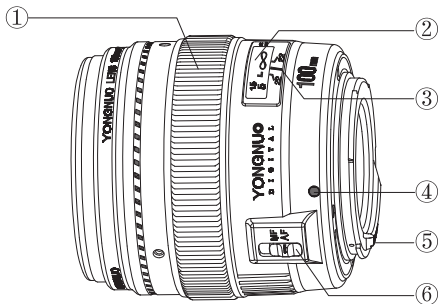
⚠ 使用注意事项

- 请勿透过镜头或相机观看太阳或明亮的光源，否则会使视力受损。
- 无论镜头是否安装在相机上，请勿将没有上镜头盖的镜头置于太阳下，否则镜头可能汇聚光线并引发火灾。不使用时请盖上镜头盖。

🔧 保养及存放注意事项

- 应避免撞击或直接放置在酷热、极冷或潮湿的环境下。
- 如果长期存放，宜选择阴凉干爽及通风良好的地方。为了保护镜头的加膜层，建议远离防虫丸或防虫丸发出气体的地方。
- 镜片上的污垢或者指纹可用柔软微湿的镜头布或镜头纸清洁，切勿使用溶剂、苯或其他有机清洁剂。
- 本镜头并不防水，下雨或者接近水源使用时须特别小心，切勿弄湿。倘若内部机件、镜片及电子零件因弄湿受损，很可能无法维修。
- 温度突变可能会令镜头表面凝结雾气或水珠，因此在天气寒冷时进入暖和的室内环境，最好将镜头放在密封的塑胶袋内，直至镜头温度接近室温为止。将镜头从温暖的环境拿到寒冷的环境中时，也请使用同样的方法。

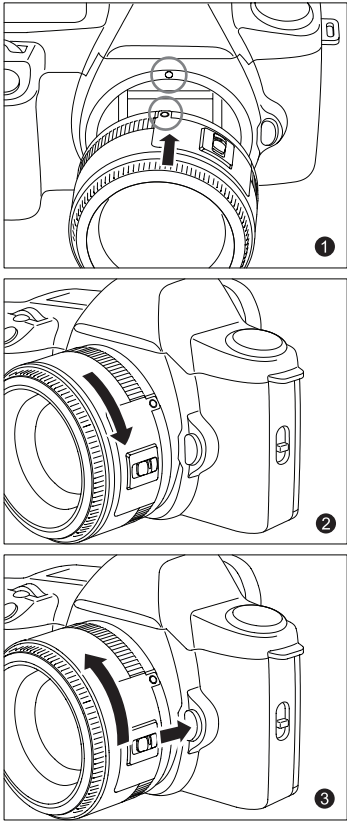
一、部件说明



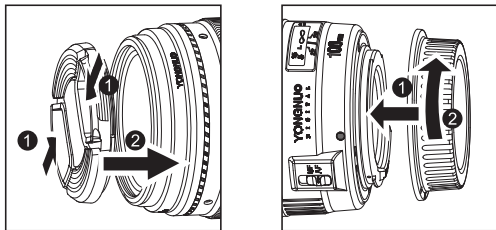
- ①对焦环 ②对焦距离指示器
③对焦距离标记 ④镜头安装标记
⑤电子触点 ⑥对焦模式开关

二、安装和卸下镜头

将镜头上的红色安装标志对准相机上的红色镜头安装标志，然后以顺时针方向旋转镜头，直到听到“咔”的一声为止。如果要卸下镜头，则保持按下相机上的镜头释放按钮，然后朝逆时针方向旋转直至停止转动为止。（详细安装及卸下镜头的步骤请参阅相机使用说明书）

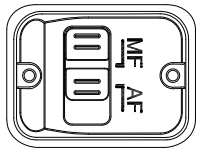


- 卸下镜头后，请将镜头后端朝上放置，以避免划伤镜头表面和电子触点。
- 如果电子触点被弄脏，划伤或沾有指纹，可能会导致腐蚀或接触不良，并可能导致相机和镜头无法正常工作。如果电子触点被弄脏或沾有指纹，请用柔软的布将其擦净。
- 取下镜头时，需要装上防尘盖。要正确安装防尘盖，将防尘盖上的安装标记对准镜头的红色安装标记，并朝顺时针方向转动。要取下防尘盖，则朝逆时针方向转动。



三、设置对焦模式

要在自动对焦（AF）模式下进行拍摄，请将对焦模式开关设置为 AF。在手动对焦（MF）模式下进行拍摄，请将对焦模式开关设置为 MF，然后转动对焦环进行对焦。



四、遮光罩

您可以另外购买遮光罩用以保护镜头和阻挡可能导致杂光或鬼影的散射光线。

- C家遮光罩ET-65III适用于本产品
- 遮光罩安装不当，可能会遮挡部分图像。

五、故障排除

1、手动对焦时已经调至最清晰，但成像依然是模糊的。
请检查镜头两端镜片是否存在指纹或污垢，如果存在请使用柔软微湿的镜头布或擦镜纸擦拭干净。

2、使用自动对焦（AF）拍出来的相片总是跑焦。

部分高端相机支持对焦微调功能，请进入相应的功能菜单检查对焦微调值是否设置为0，具体设置方法请参阅您的相机说明书。

3、镜头装相机上通信异常。

请确保镜头安装到位；请检查镜头触点和相机触点是否被划伤或存在指纹，如果被划伤请返厂维修，如果存在指纹请用柔软的布将其擦净。

4、镜头已设为自动对焦（AF），但是半按快门不能自动对焦。

请检查相机机身是否同样配备了对焦模式开关，请确保将相机机身开关同样设为自动对焦（AF）状态。

六、规格

镜头焦距	100mm
镜头结构	6组8片
光圈叶片	9片
最小光圈	F/22
最近对焦距离	约0.9米
最大放大倍率	约0.14倍
驱动系统	直流马达
滤镜直径	58毫米
最大直径及长度	约Φ76×83毫米
重量	约390克

- 镜头长度是指从安装面到镜头前端的距离。
- 除特别说明外，尺寸和重量只适用于镜头。
- 光圈设置可以由相机指定。

本说明书最新电子档可在永诺官方网站www.hkvongnuo.com获取。

本使用说明书中的功能及数据均是依据本公司的测试条件获得。设计和规格如有变更，恕不另行通知。
本使用说明书中的永诺（YONGNUO）徽标是深圳市永诺摄影器材股份有限公司在中国或/和其他国家（地区）的注册商标或商标。其他所有商标均为其各自所有者拥有。

深圳市永诺摄影器材股份有限公司
地址：深圳市坪山区坑梓街道深福保现代光学厂区A座
电话：（086）0755-8376 2448
邮箱：service@hkyongnuo.com
网址：www.hkyongnuo.com
全国服务电话：400-001-3888

Medium Telephoto Prime Lens
YN100mm F2
User Manual

Thanks for choosing YONGNUO product!

Please read this user manual carefully before use and understand this manual for proper use. Keep this manual properly for reference in the future.

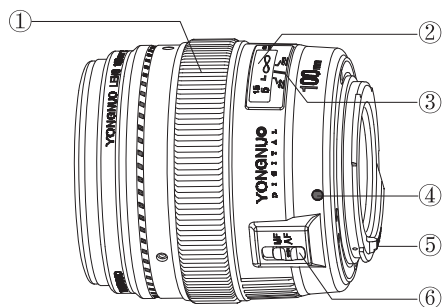
Safety Precautions

- Do not stare at the sun or a bright light source through the lens or camera. Otherwise it could result in visual impairment.
- Whether the lens installed on the camera or not, do not place the lens which without lens cover in the sun. Otherwise the lens may gather light and result in a fire.

Maintenance and Saving Precautions

- Should avoid collisions or placed directly in extreme heat, cold or wet environment.
- For long-term storage, please select the cool, dry and ventilated place. In order to protect the film of lens, it is suggested that far from the insect-resistant pill or insect pill emit gases.
- Contaminant or fingerprint on the lens can be cleaned with slight damp soft cleaning cloth or lens paper, do not use solvents, benzene or other organic cleaner.
- The lens is not waterproof, rain or close to the water must be especially careful when using, do not get wet. If the internal parts, lens and electronic components was damaged due to wet, it may cause unlikely to repair.
- Temperature mutations could make the surface of the lens condense to fog or water droplets, so when the weather was cold into a warm indoor environment, it is suggested to place the lens into the sealed plastic bag, until the lens temperature close to room temperature. When the lens from the heat to the cold environment, also please use the same method.

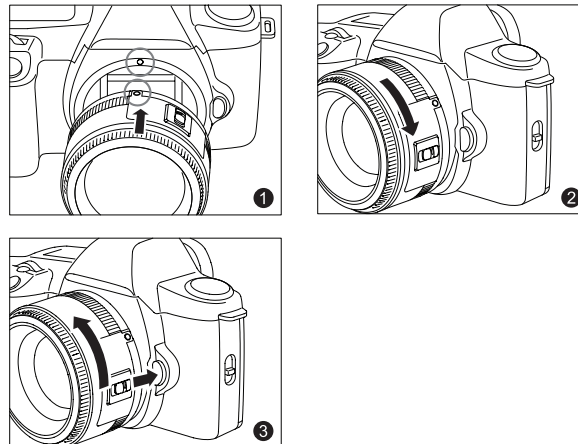
I .Nomenclature



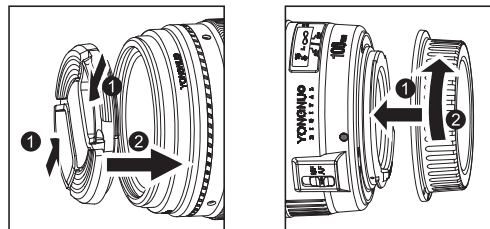
- ①Focus ring
- ②Focus range indicator
- ③Focus distance markers
- ④Lens mounting mark
- ⑤Electronic contact
- ⑥Focus modes switch

II .Install and Discharge the Lens

Install the lens with the white mounting mark direct at the red lens mounting mark of the camera, then rotate the lens in clockwise direction until hearing the sound of "click". If you want to discharge the lens, rotate the lens in counterclockwise direction until it stop running. (For the detailed steps of lens installation and discharge please refer to the camera instruction manual).

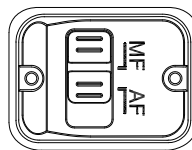


- After discharging the lens, please place the lens back-end upwards in order to avoid scratch the lens surface and electronic contact.
- If the electronic contact is smeared, scratched, or stained with fingerprint, may cause corrosion or poor contact. The camera and lens might not work properly. Please use soft cloth to wipe it if the electronic contact is smeared or stained with fingerprint.
- When taking off the lens, please install the dust cover. To properly install the dust cover, allow the mounting mark on the dust cover direct at the red mounting mark of the lens, and rotate in clockwise direction. While rotate in counterclockwise direction to take down the dust cover.



III .Focus Mode Setting

To use the auto-focus (AF) mode in shooting, please set the focus mode to AF. To use the manual focus (MF) mode in shooting, please set the mode to MF, then rotate the focusing ring to focus.



IV .Lens Hood

If necessary, you can purchase a lens hood to protect the lens and resist the scattered beam which may generate stray lights or ghosting.

- Canon hood ET-65III can be used on YN100mm F2.
- Part of the picture may be blocked if the hood is not attached properly.

V .Troubleshoot

1. In spite it has been adjusted to most clear by manual focus, the image is still vague.

Please check if the contaminant or fingerprint on the both sides of the lens, if exist please clean with slight damp soft lens cloth or lens paper.

2. Always lose focus when using Auto focus to take photos.

Parts of the high-end camera supports fine tuning function. Please enter into the function and make sure the focus fine-tuning value is set to 0, for the detail setting method, please refer to your camera manual.

3. Abnormal communication when the lens installed on the camera.

Please make sure the lens in proper installation and the electric contacts of the lens and camera are without foreign body.

4. The lens has set to auto focus (AF), but unable to focus when half pressing the camera shutter.

If your camera with the focus mode switch, please make sure the camera focus mode switch is set to auto focus (AF).

VI .Product Specification

The Lens Focal Length	100mm
Lens Construction	6 sets; 8 pieces
Aperture Blades	9 pieces
Minimum Aperture	F/22
Minimum Focusing Distance	About 0.9 meters
Maximum Magnification	About 0.14 times
Drive Dystem	Direct current motor
Filter Diameter	58mm
Maximum Diameter and Length	About Φ76×83mm
Weight	About 390g

- The lens length refers to the distance from the mounting side to the lens front end.
- Unless special stated, the dimension and weight is only suitable for lens.
- The Aperture can be specified by the camera.

The electronic version manual can be downloaded from YONGNUO official website www.hkyongnuo.com.

The functions and data of this manual are based on test conditions of our company. If any changes in the design and specifications will without notice.

The YONGNUO logo in this manual is the trademark of Shenzhen YONGNUO Photographic Equipment Co., Ltd. and registered trademark in China or/and other countries (regions). All other trademarks are the property of their respective owners.

Shenzhen YONGNUO Photographic Equipment Co., Ltd.
Address: Building A, Shenfubao modern optics factory, Kengzi Street, Pingshan District, Shenzhen, China
Phone: (86) 0755-8376 2448
Email: service@hkyongnuo.com
Website: www.hkyongnuo.com
Hotline: 400-001-3888